

DIAS

energy saving in road lighting

**PILUX &
DANPEX**

energy saving lighting, energy control

DIAS - Energy saving safety and functionality!

IP 65 □ ▽ CE EN 60598-1, EN 60598-2-3

Sturdy construction of die cast aluminum alloy with a high resistance to harsh environments

Light dimming option for additional energy savings during low traffic periods



Double fixing system for metal arms with or without inclination



Adjustment possibility for both "ellipsoid" and "tubular" type lamps

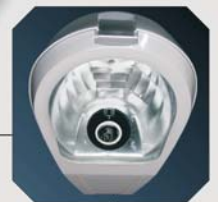
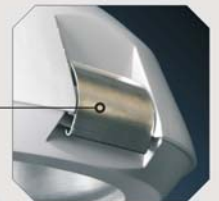
Suitable for high intensity discharge (HID) lamps:
 High pressure sodium (50W 400W)
 Metal halide (70W 700W)
 Mercury (50W 250W)
 Electronic fluorescent (30W)

"Cut-off" type louvre for glare control

Aerodynamic shape with minimum resistance against extreme wind forces ($S_{max} = 0.08$)



Stainless steel clips facilitate installation, maintenance and lamp replacement



Durable diffuser made of tempered glass

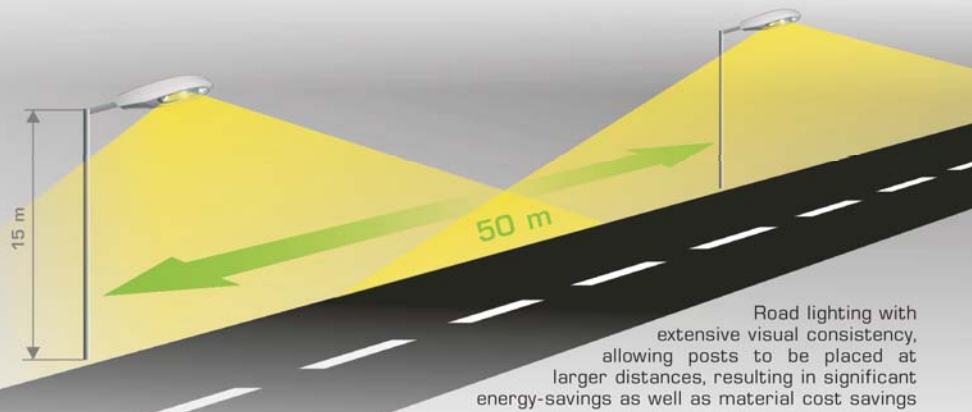
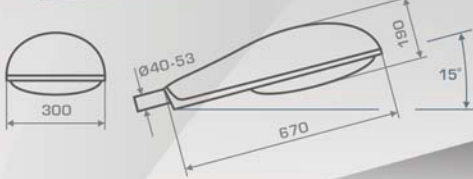
High light performance level of LOR = 87% for maximized energy-savings.
 Reflector made of high-purity (99.85%) anodized aluminum



Highest quality gear components, fixed onto removable gear tray. Easy and safe access aided by a folding support which keeps the luminaire open

size I

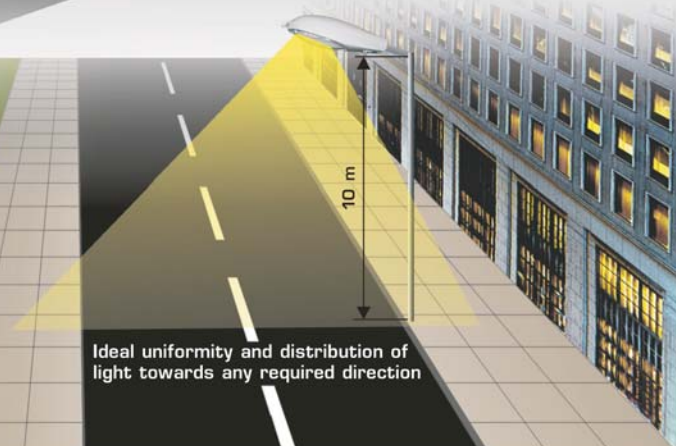
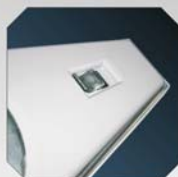
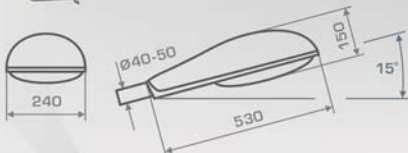
mounting height from 10m to 15m



Road lighting with extensive visual consistency, allowing posts to be placed at larger distances, resulting in significant energy-savings as well as material cost savings

size II

mounting height up to 10m



Ideal uniformity and distribution of light towards any required direction